

GP4000M Series Panel Cutout Adapter

GP270-GP4000M-AT00, GP377-GP4000M-AT00

GP37W2-GP4000M-AT00

■NOTE:

Fasteners are not included in the Panel Cutout Adapter.

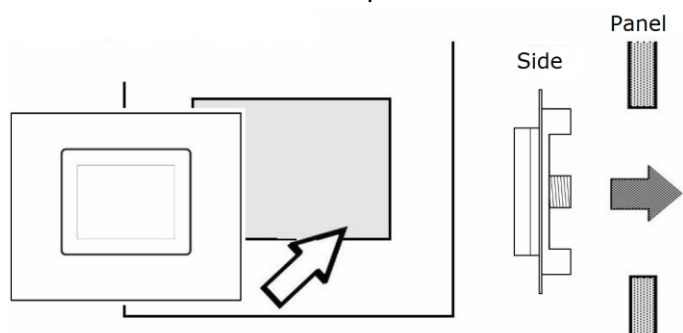
Use the fasteners with which the GP unit was mounted.




SCIGATE AUTOMATION (S) PTE LTD
 No. 1 Bukit Batok Street 22 #01-01 Singapore 659592
 Tel: (65) 6561 0488 Fax: (65) 6562 0588
 Email: sales@scigate.com.sg Web: www.scigate.com.sg
 Business Hours: Monday - Friday 8.30am - 6.15pm

■Installation Requirements

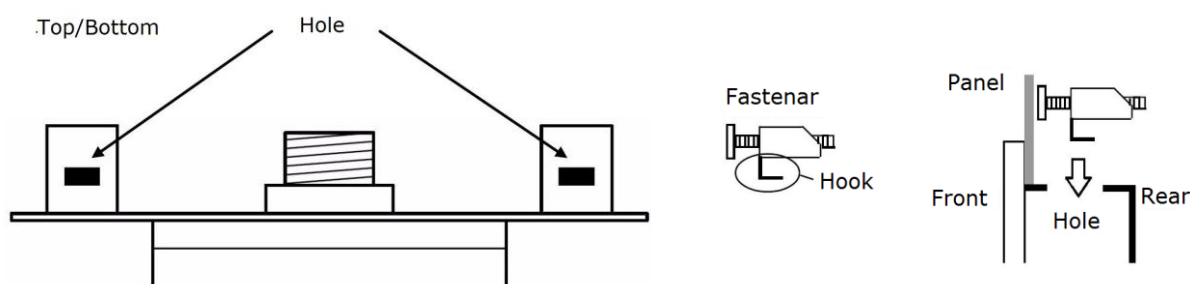
Mount the Panel Cutout Adapter in the installation hole from the front side of the panel.



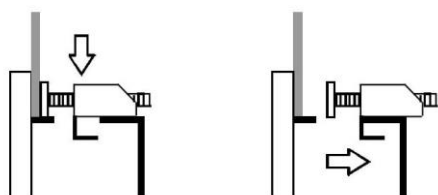
Panel Cutout Adapter	Panel cut size
GP270-GP4000M-AT00	158 ^{+0.5} ₋₀ x 113 ^{+0.5} ₋₀
GP377-GP4000M-AT00	156 ⁺¹ ₋₀ x 123.5 ⁺¹ ₋₀
GP37W2-GP4000M-AT00	191.5 ⁺¹ ₋₀ x 141.5 ⁺¹ ₋₀

Fix the back side of the panel with the fasteners.

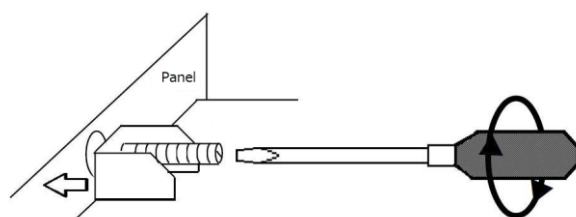
- (1) Put the fasteners in the holes at four places on the top and bottom sides of the Panel Cutout Adapter.



- (2) Slide the fastener backward.

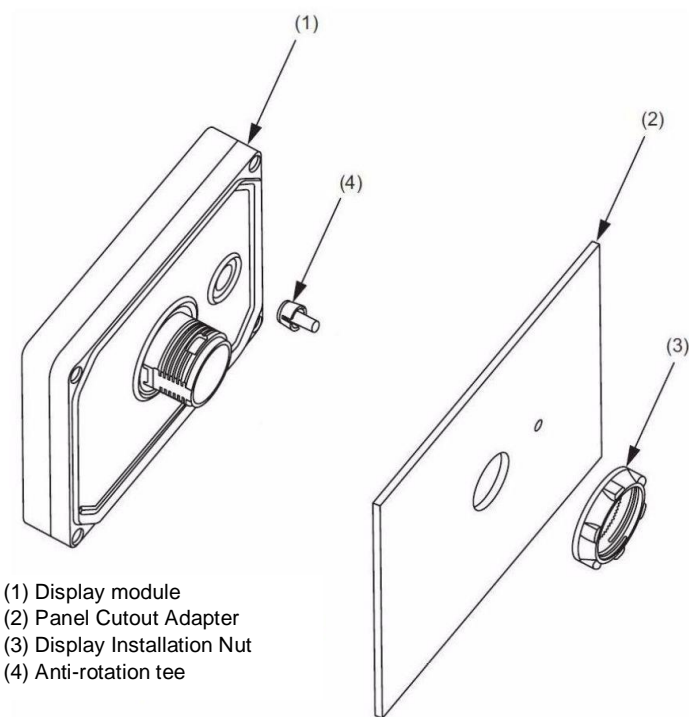


- (3) Tighten the screw of the fastener with a driver. The torque for drip-proof effect is 0.5 to 0.6N·m.



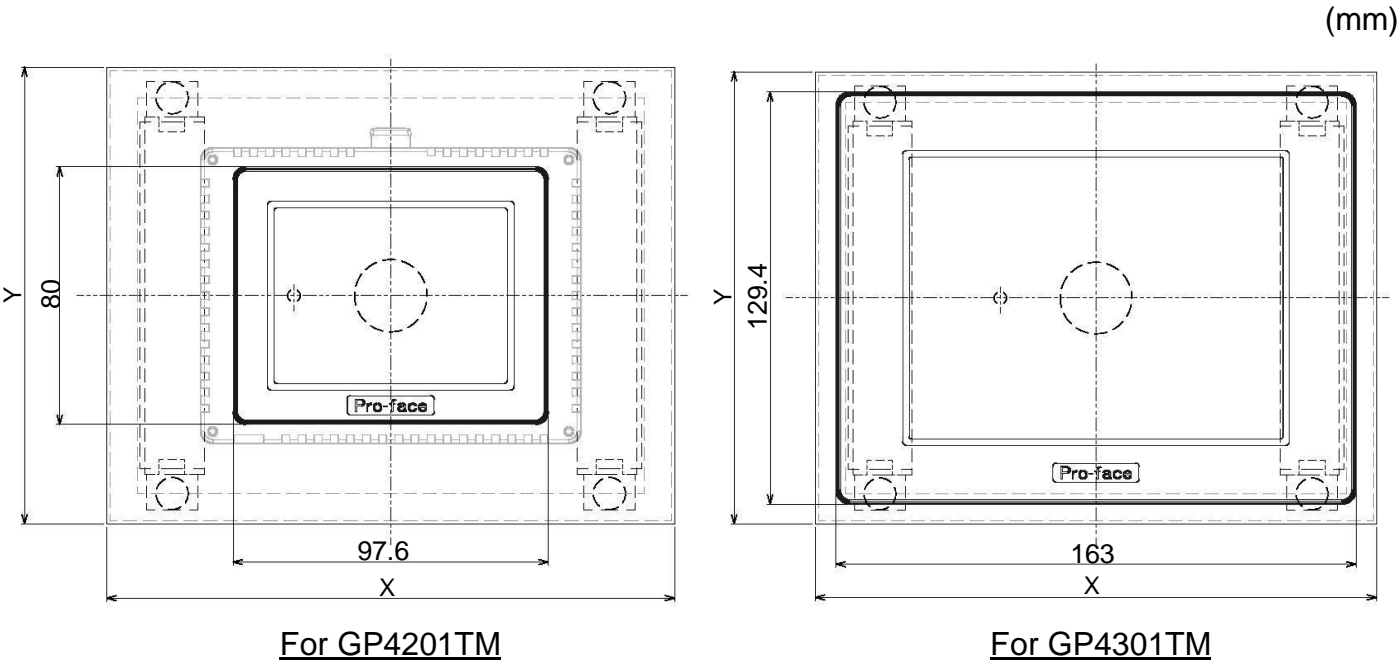
*Tightening the screw too much may cause damage to the product.

■ Attach the display module.



*For details of the installation procedures, the dimensions and the installation requirements of GP4000M Series, refer to the GP4000M Series installation guide or hardware manual.

■ External Form for reference



Panel Cutout Adapter	X	Y
GP270-GP4000M-AT00	176	142
GP377-GP4000M-AT00		
GP37W2-GP4000M-AT00	213	163

Material: steel place
Thickness: 1.6 mm

*The contents of this manual are subject to change without notice.